



6", 8", 12" (DN150,200,300)
PRO series linear drainage



Matrix of products of the PRO class lines

Note: 6", 8", 12" DN150, 200, 300 lines are separated by a different background color.
 Complete set of accessories with divided borders
 If there is no visible boundary, the product is universal for several lines

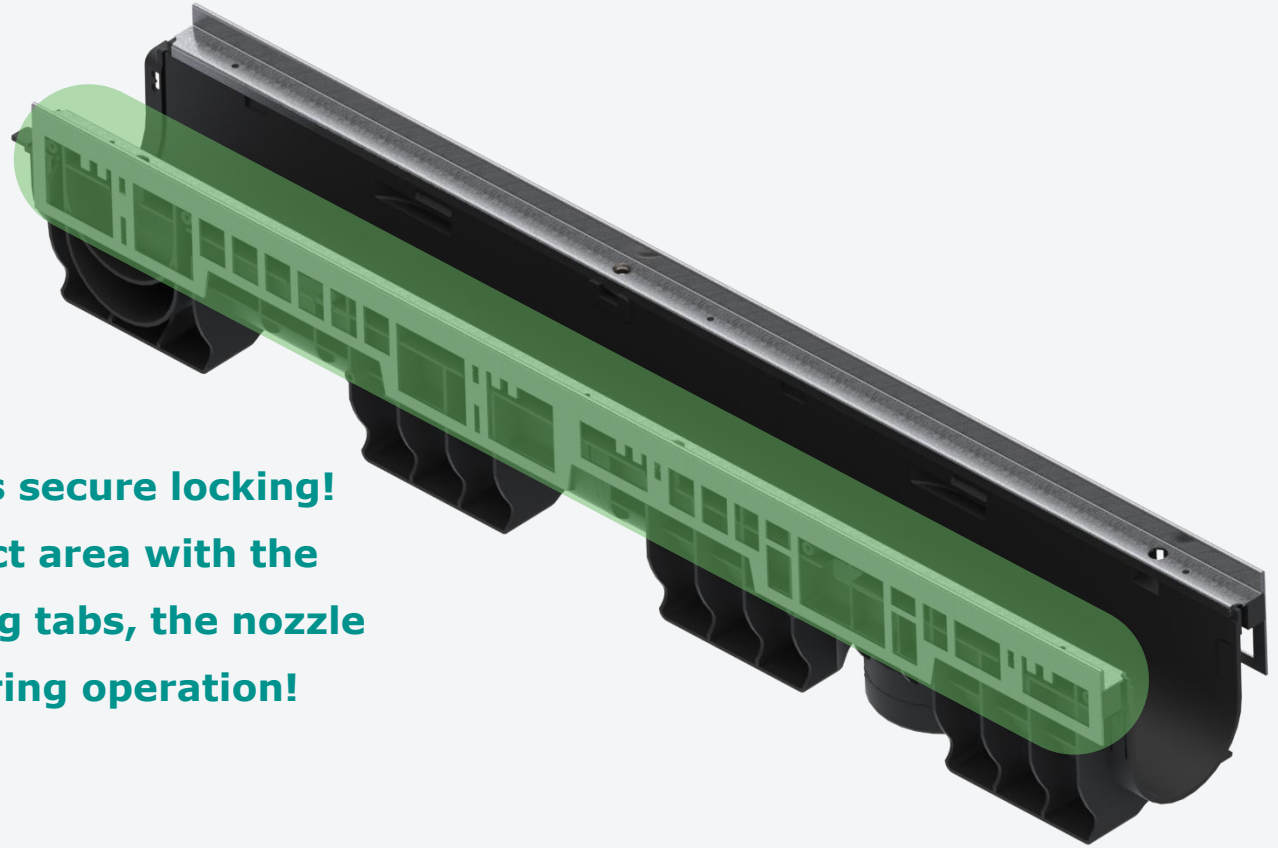
Line	Grates	Combinati on end cup (start/end of channel)	End cup with outlet (channels end)	Cascade adapters	Outlet bottom	Sand trap			Brace universal
						ST	Adapt ers ST	Set	
6" DN150	<p>082103043 H4.53" (115) D400</p>	<p>632100</p>	<p>6321008 3" DN75</p>	<p>6327.1 3.94" - 7.87" H100-H200</p>			<p>685182</p>	<p>0858123043.9 (w.o. bas.)</p>	
	<p>082203043 H8.47" (215) D400</p>	<p>632-2 4" DN110</p>		<p>6327.1 3.94" - 7.87" H100-H200</p>	<p>68655 4" DN110</p>		<p>085813043 22.24" (H565)</p>	<p>0858123043 (w. bas.)</p>	<p>68601</p>
8" DN200	<p>085103043 H4.53" (115) D400</p>	<p>635100</p>	<p>6351008 3" DN75</p>	<p>6357.1 3.94" - 7.87" H100-H200</p>		<p>6852 6" DN160</p>	<p>085813043 22.24" (H565)</p>	<p>085813043.9 (w.o. bas.)</p>	
	<p>085203043 H8.47" (215) D400</p>	<p>635-2 4" DN110</p>		<p>6357.1 3.94" - 7.87" H100-H200</p>	<p>6852 6" DN160</p>	<p>6859</p>	<p>68518</p>	<p>085813043 (w. bas.)</p>	
	<p>085303043 H12.4" (215) D400</p>	<p>635-4 8" DN200</p>		<p>6357.2 7.87" - 11.8" H200-H300</p>	<p>6855 8" DN200</p>	<p>6859</p>	<p>68518</p>	<p>085813043 (w. bas.)</p>	
12" DN300	<p>087303043 H10.83" (275) D400</p>	<p>637300 8" DN200</p>			<p>6857 12" DN315 Only under the 12" DN300</p>				

**Linear drainage
system
PRO 6" (DN150)**



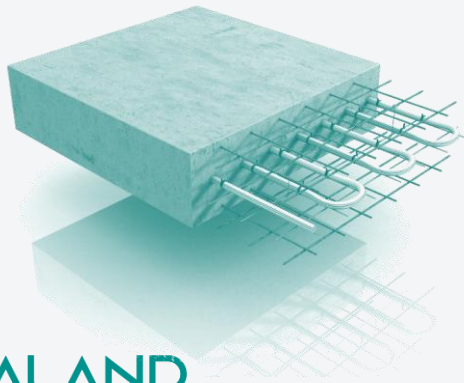
SECTION 1

Feature of PRO D400



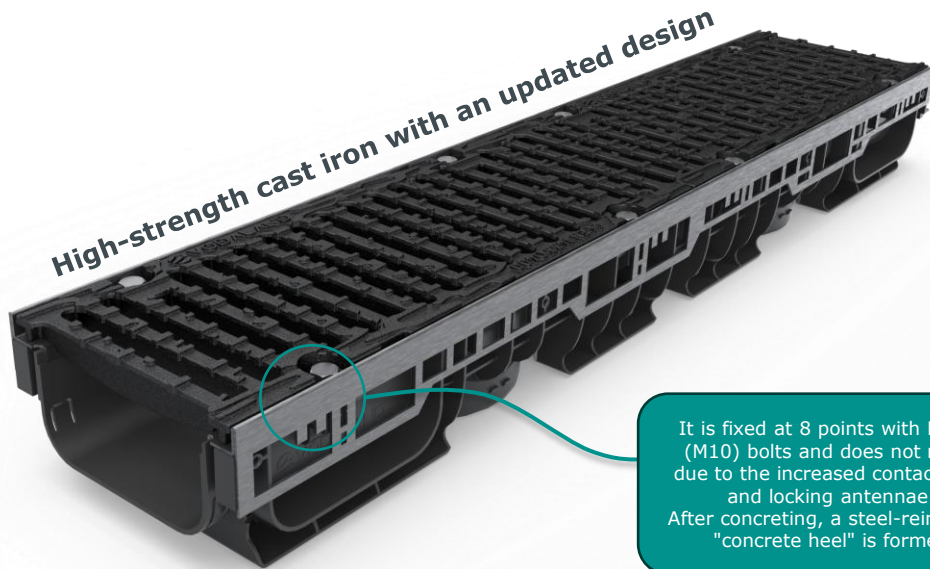
The PRO series nozzle has secure locking!

Thanks to a larger contact area with the channel and special bending tabs, the nozzle stays firmly in place during operation!



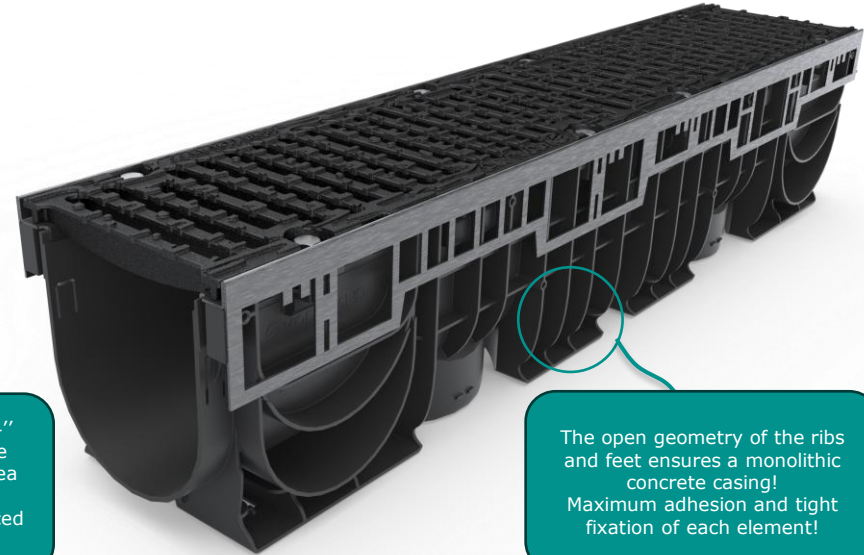
We get a reinforced concrete heel with steel reinforcement after concrete pouring!

Series PRO D400 H4.53''(115), H8.47''(215)



High-strength cast iron with an updated design

It is fixed at 8 points with M0.4'' (M10) bolts and does not move due to the increased contact area and locking antennae. After concreting, a steel-reinforced "concrete heel" is formed



The open geometry of the ribs and feet ensures a monolithic concrete casing! Maximum adhesion and tight fixation of each element!

Name NA(EU)	6" PRO Neutral Channel H4.53" with cast iron slotted grate D400 (Plastic channel PRO DN150 H115 with cast iron slotted grate D400)
Width, inch (mm)	8-1/4" (210)
Heights, inch (mm)	4-1/2" (115)
Installation length, inch (mm),	39-3/8" (1000)
The length is total, inch (mm)	40-1/4" (1021)
Weight, lb (kg)	35.7 (16,2)
Article	821013043



Name NA(EU)	6" PRO Neutral Channel H8.47" with cast iron slotted grate D400 (Plastic channel PRO DN150 H215 with cast iron slotted grate D400)
Width, inch (mm)	8-1/4" (210)
Heights, inch (mm)	8-1/2" (215)
Installation length, inch (mm),	39-3/8" (1000)
The length is total, inch (mm)	40-1/4" (1021)
Weight, lb (kg)	38.8 (17,6)
Article	822013043

Areas of application of the PRO series

Load class: D400

Advantages:

- Reinforced fastening: **8 fixing points with 0.4" (M10) bolts**
- Robust design + stiffeners
- The perfect combination: **high throughput 6" (DN150) + high load-bearing capacity**

4" H100

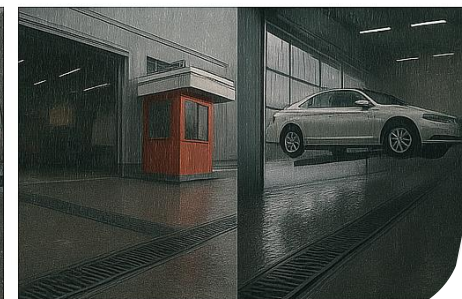
Застосування:

- Gas stations, car wash areas, places with high local traffic intensity
- Access roads with trucks
- Service areas, ramps
- Indispensable in cases of **high hydraulic load with limited installation depth**

7.87" H200

Application:

- Cargo terminals, automobile transport centers, logistics centers
- Industrial zones, entrances for trucks and heavy trucks equipment
- Highways, unloading zones with **peak showers**
- Optimal for **deep installation with concrete reinforced heel**



**Linear drainage
system
PRO 8" (DN200)**



SECTION 2

Series PRO D400 H4.53''(115), H8.47''(215), H12.4''(315)



Name NA(EU)	8" PRO Neutral Channel H4.53" with cast iron slotted grate D400 (Plastic channel PRO DN200 H115 with cast iron slotted grate D400)
Width, inch (mm)	10-1/4" (260)
Heights, inch (mm)	4-1/2" (115)
Installation length, inch (mm),	39-3/8" (1000)
The length is total, inch (mm)	40-1/4" (1021)
Weight, lb (kg)	44.68 (20,27)
Article	851013043

Name NA(EU)	8" PRO Neutral Channel H8.47" with cast iron slotted grate D400 (Plastic channel PRO DN200 H215 with cast iron slotted grate D400)
Width, inch (mm)	10-1/4" (260)
Heights, inch (mm)	8-1/2" (215)
Installation length, inch (mm),	39-3/8" (1000)
The length is total, inch (mm)	40-1/4" (1021)
Weight, lb (kg)	48.02 (21,78)
Article	852013043

Name NA(EU)	8" PRO Neutral Channel H12.4" with cast iron slotted grate D400 (Plastic channel PRO DN200 H215 with cast iron slotted grate D400)
Width, inch (mm)	10-1/4" (260)
Heights, inch (mm)	12-3/8" (315)
Installation length, inch (mm),	39-3/8" (1000)
The length is total, inch (mm)	40-1/4" (1021)
Weight, lb (kg)	50.45 (22,89)
Article	853013043

Areas of application of the PRO series

Load class: D400

Advantages:

- Reinforced fastening: **8 fixing points with 0.4" (M10) bolts**
- Robust design + thickened stiffeners
- The perfect combination: **maximum throughput 8" (DN200) + high load-bearing capacity**

◆ **4" H100 – when the mounting depth is limited but the load is high**

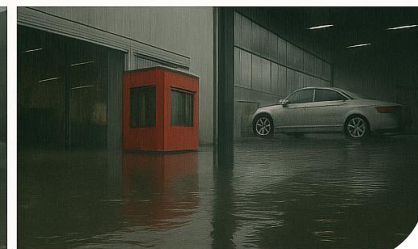
- Gas stations, ramps, commercial truck stops, service stations
- Short-term passage zones for freight transport
- Maximum efficiency while maintaining a shallow installation depth
- Multipoint anchoring + reinforced concrete = landslide protection

◆ **7.87" H200 – the universal choice for commercial vehicles**

- Industrial zones, warehouses, logistics sites
- Service entrances, ramps of loading and unloading complexes
- Second-level highways
- Reducing the hydraulic risk in places of peak storm load

◆ **11.81" H300 – highest stability and drainage efficiency**

- Transport and logistics hubs, freight yards, ports
- City streets with a large number of exits
- Ideal for concreting with heels
- Guaranteed effective drainage even in case of heavy rainfall



**Universal sand
trap**

**PRO 6" (DN150)
PRO 8" (DN200)**



SECTION 3

PRO D400 sand traps for connection of PRO 6" DN150 channels



Name NA(EU)	8" Base sand trap H22.24" with adapters for connection to DN150 channels (2 pcs.), basket and cast iron slotted grate D400 (Plastic sand trap PRO DN200 H565 with adapters for connection to DN150 channels (2 pcs.), basket and cast iron slotted grate D400)
Width, inch (mm)	10-1/4" (260)
Heights, inch (mm)	22-1/4" (565)
Installation length, inch (mm)	19-5/8" (500)
Total length, inch (mm)	21-5/8 (550)
Weight, lb (kg)	25.17 (11,42)
Article	0858123043

Name NA(EU)	8" Base sand trap H22.24" with adapters for connection to DN150 channels (2 pcs.) and cast iron slotted grate D400 without basket (Plastic sand trap PRO DN200 H565 with adapters for connection to DN150 channels (2 pcs.) and cast iron slotted grate D400 without basket)
Width, inch (mm)	10-1/4" (260)
Heights, inch (mm)	22-1/4" (565)
Installation length, inch (mm)	19-5/8" (500)
Total length, inch (mm)	21-5/8 (550)
Weight, lb (kg)	23.92 (10,85)
Article	0858123043.9

PRO D400 sand traps for connection of PRO 8" DN200 channels

[Link](#)

Note: The complete set of the sand trap is shown on the [slide 5](#).

Note: The functionality of the kit is unified to that described on the [slide 24](#).



Name NA(EU)	8" Base sand trap H22.24" with adapters (2 pcs.), basket and cast iron slotted grate D400 (Plastic sand trap PRO DN200 H565 with adapters (2 pcs.), basket and cast iron slotted grate D400)
Width, inch (mm)	10-1/4" (260)
Heights, inch (mm)	22-1/4" (565)
Installation length, inch (mm)	19-5/8" (500)
Total length, inch (mm)	21-5/8" (550)
Weight, lb (kg)	25.17 (11,42)
Article	085813043

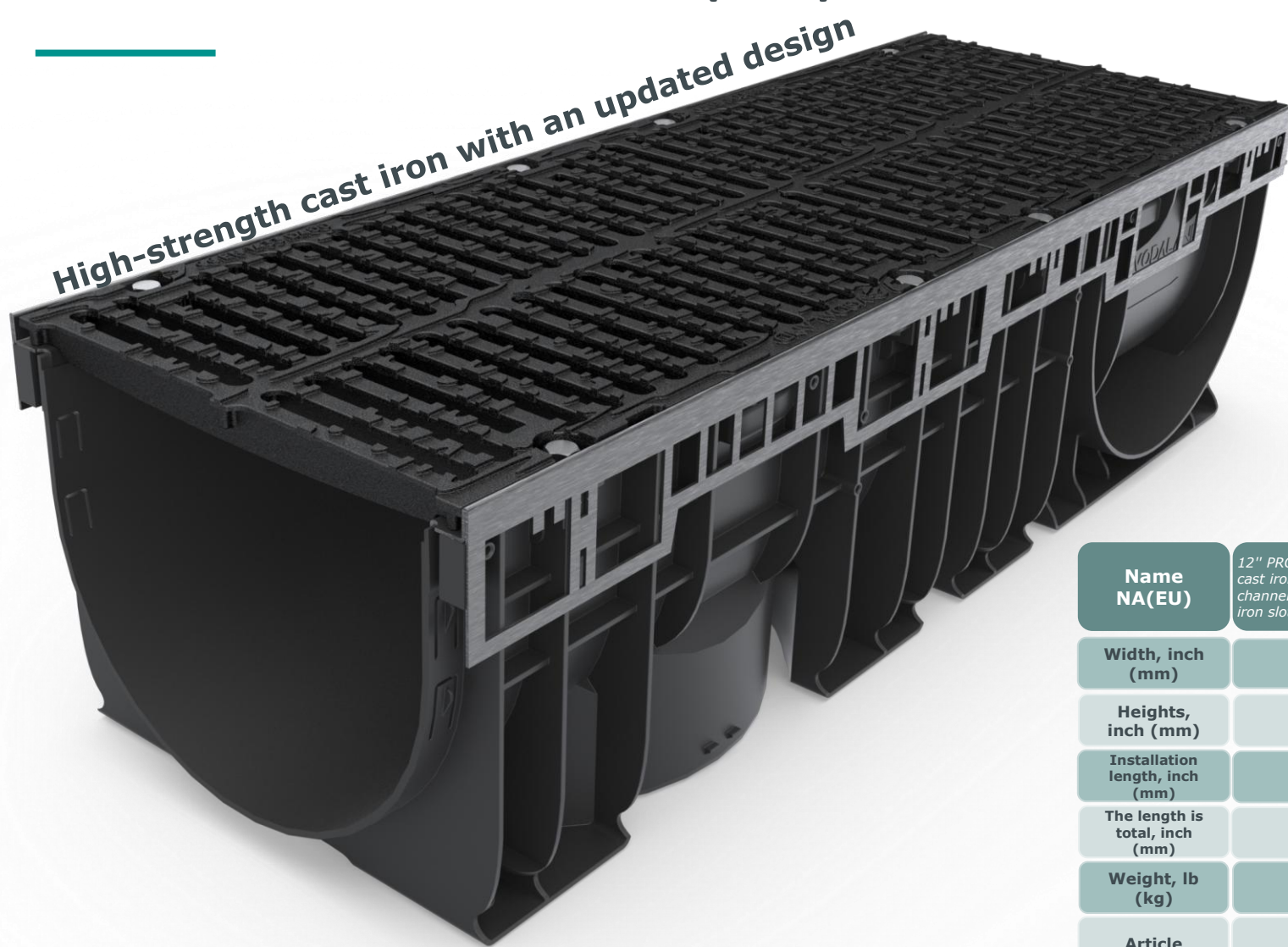
Name NA(EU)	8" Base sand trap H22.24" with adapters (2 pcs.) and cast iron slotted grate D400 without basket (Plastic sand trap PRO DN200 H565 with adapters (2 pcs.) and cast iron slotted grate D400 without basket)
Width, inch (mm)	10-1/4" (260)
Heights, inch (mm)	22-1/4" (565)
Installation length, inch (mm)	19-5/8" (500)
Total length, inch (mm)	21-5/8" (550)
Weight, lb (kg)	23.92 (10,85)
Article	085813043.9

**Linear drainage
system
PRO 12" (DN300)**



SECTION 4

Series PRO D400 H10.83''(275)



**Name
NA(EU)**

*12" PRO Neutral Channel H10.83" with
cast iron slotted grate D400 (Plastic
channel PRO DN300 H275 with cast
iron slotted grate D400)*

**Width, inch
(mm)**

14-1/8" (360)

**Heights,
inch (mm)**

10-7/8" (275)

**Installation
length, inch
(mm)**

39-3/8" (1000)

**The length is
total, inch
(mm)**

40-1/4" (1021)

**Weight, lb
(kg)**

90.83 (41,2)

Article

873003043

Areas of application of the PRO series

CLASS D400 (for high load)

■ Areas of application (12" DN300 H10.83" (300), D400):

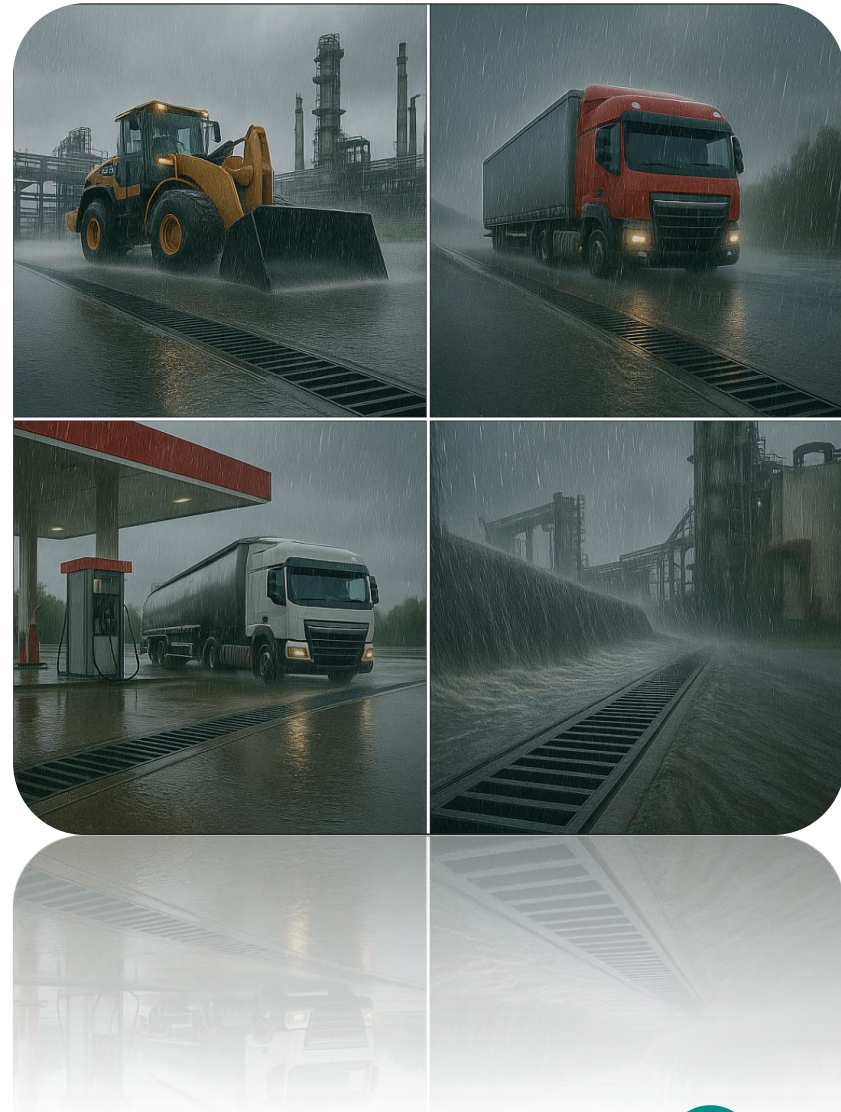
- Industrial facilities with heavy traffic of heavy machinery
- Airport parking lots, logistics hubs, loading docks
- Freeways, highways, interchanges with concrete cage
- Emergency drainage zones near thermal power plants, sewage treatment plants
- Gas stations, industrial car washes, concrete sites for industrial water discharge

Places with potential flood hazards or where there is regular peak precipitation

✦ Advantages:

Works as the "main line of water protection"

Ideal for concreting with a reinforced heel





Vodaland 2025

Thank you for
YOUR
attention!

